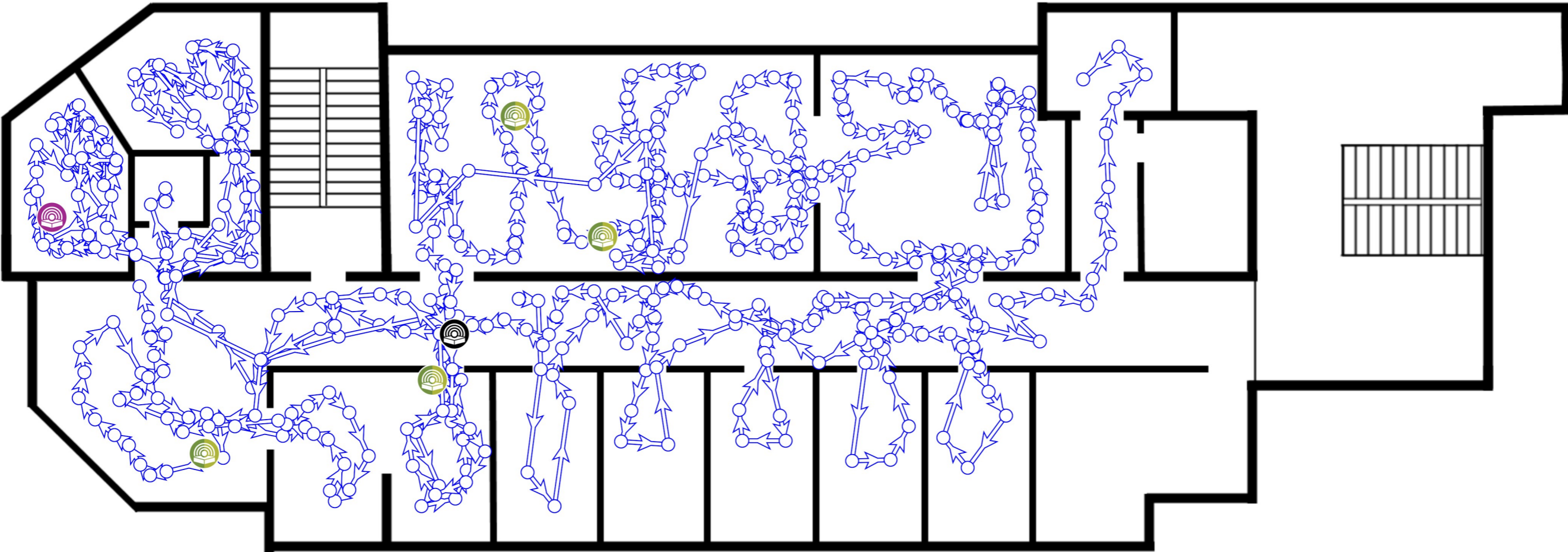


# Site Survey Report

Powered by TamoGraph®

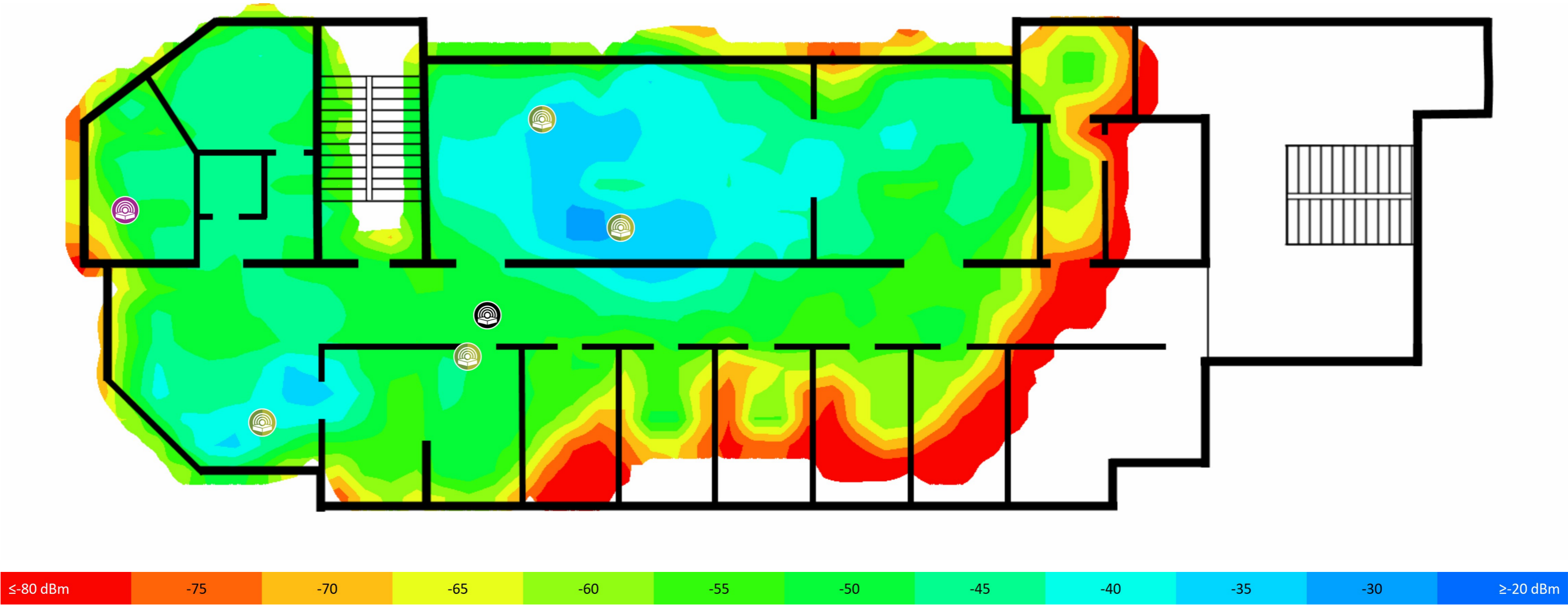


	PassiveSurvey_SampleReport_mod3	
	Milla B.	
	Floor 2	
	Passive Survey	
	18	2021 .



	SSID	MAC					
	Neighbors3rdFloor	Cookies	F0:79:00:00:00:64		1	216.7	WPA2PSK (CCMP) -40
	Aruba 802.11ax	Espresso	00:0B:86:00:00:11	ArubaaHe	1	286.8	WPA2PSK (CCMP) -19
	Aruba 802.11ax	Tiramisu	00:0B:86:00:00:90	ArubaaHe	6	286.8	WPA2PSK (CCMP) -41
	Aruba 802.11ax	Cappuccino	00:0B:86:00:00:A4	ArubaaHe	1	286.8	WPA2PSK (CCMP) -17
	Aruba 802.11ax	Cappuccino-5	00:0B:86:00:00:A6	ArubaaHe	44 (44-48@40, 36-48@80, 36-64@160)	2402.0	WPA2PSK (CCMP) -10
	Aruba 802.11ax	Cappuccino	00:0B:86:00:00:4A	ArubaaHe	6 (6-8@40)	573.5	WPA2PSK (CCMP) -17
	Aruba 802.11ax	Cappuccino-5	00:0B:86:00:00:4C	ArubaaHe	44 (44-48@40, 36-48@80)	1201.0	WPA2PSK (CCMP) -22
	Cisco 802.11n (5 GHz)	SenchaTea	58:6D:00:00:00:7D		36 (36-40@40)	450.0	WPA2PSK (CCMP) -35
	Cisco 802.11n (2.4 GHz)	SenchaTea	58:6D:00:00:00:7C		11	144.4	WPA2PSK (CCMP) -33

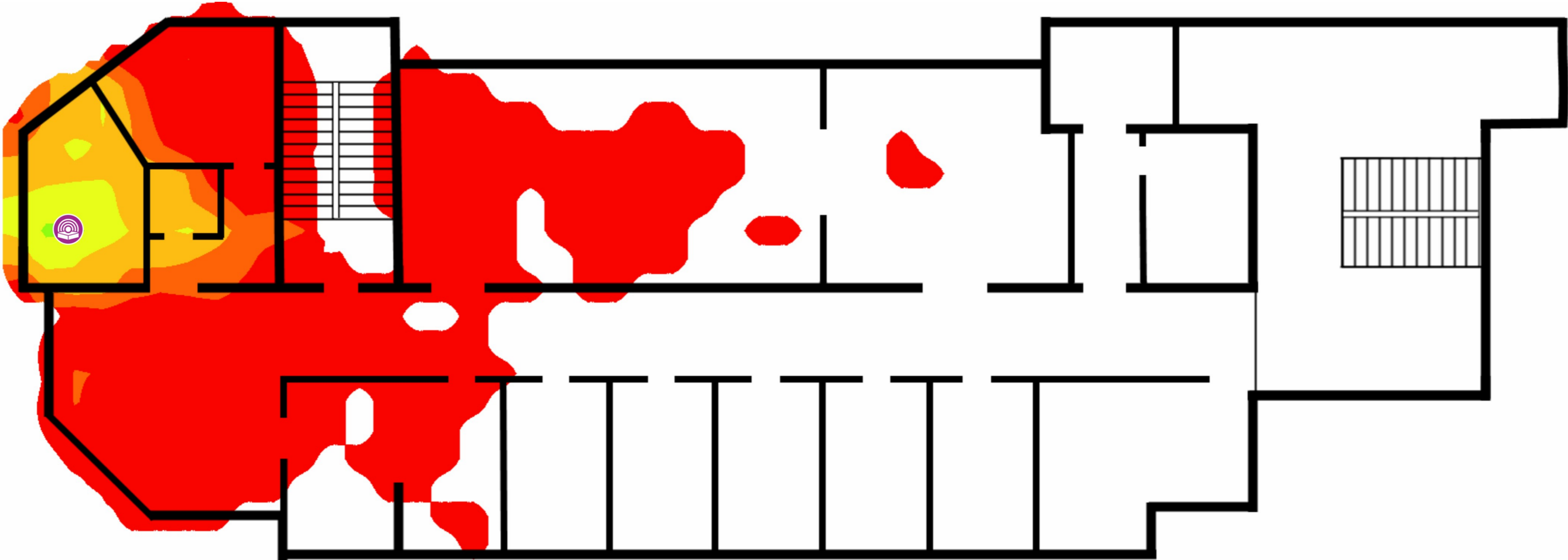
( ), dBm.



(Neighbors3rdFloor - F0:79:00:00:00:64)

( , dBm.

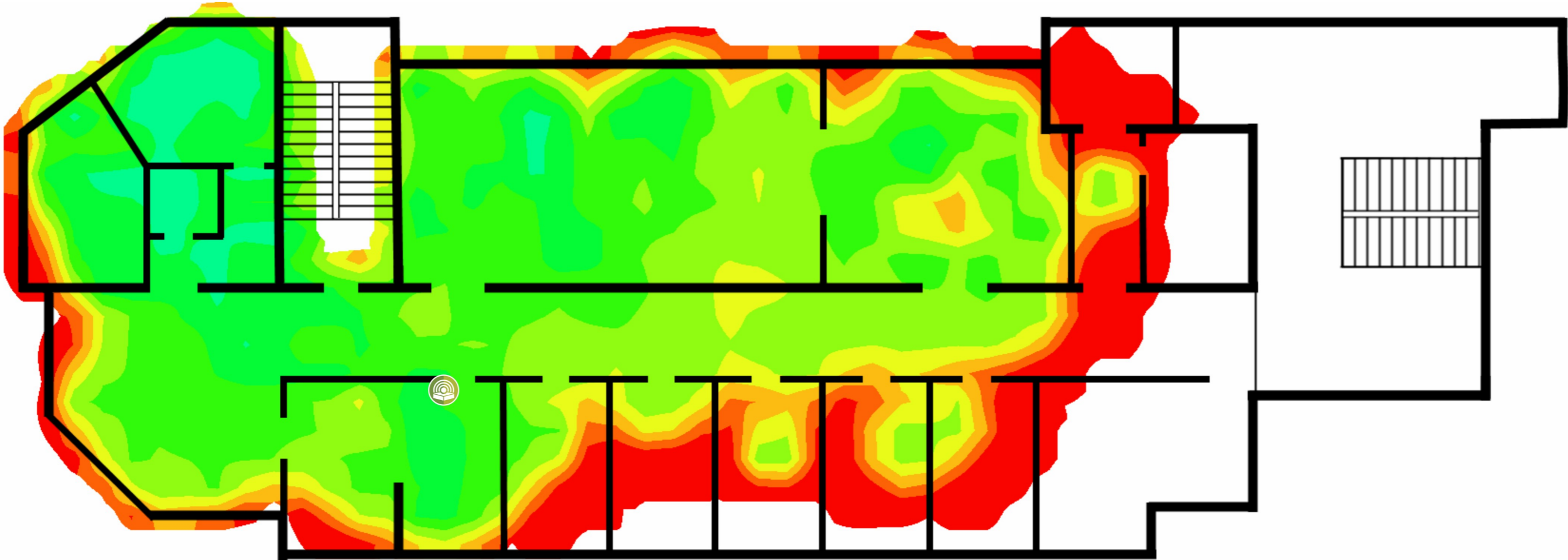
	SSID	MAC					
Neighbors3rdFloor	Cookies	F0:79:00:00:00:64		1	216.7	WPA2PSK (CCMP)	-40



(Aruba 802.11ax - 00:0B:86:00:00:11)

( , dBm.

	SSID	MAC					
Aruba 802.11ax	Espresso	00:0B:86:00:00:11	ArubaaHe	1	286.8	WPA2PSK (CCMP)	-19



(Aruba 802.11ax - 00:0B:86:00:00:90)

( , ) , dBm.

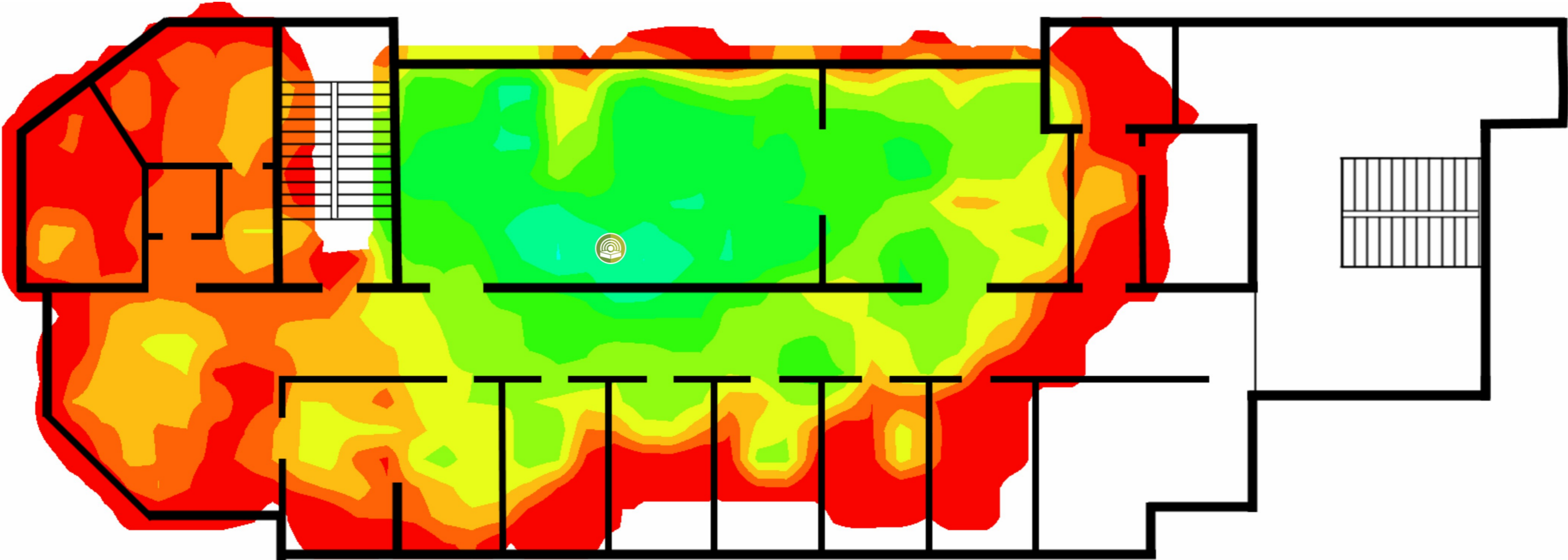
	SSID	MAC					
Aruba 802.11ax	Tiramisu	00:0B:86:00:00:90	ArubaaHe	6	286.8	WPA2PSK (CCMP)	-41



(Aruba 802.11ax - 00:0B:86:00:00:A4)

( , ) , dBm.

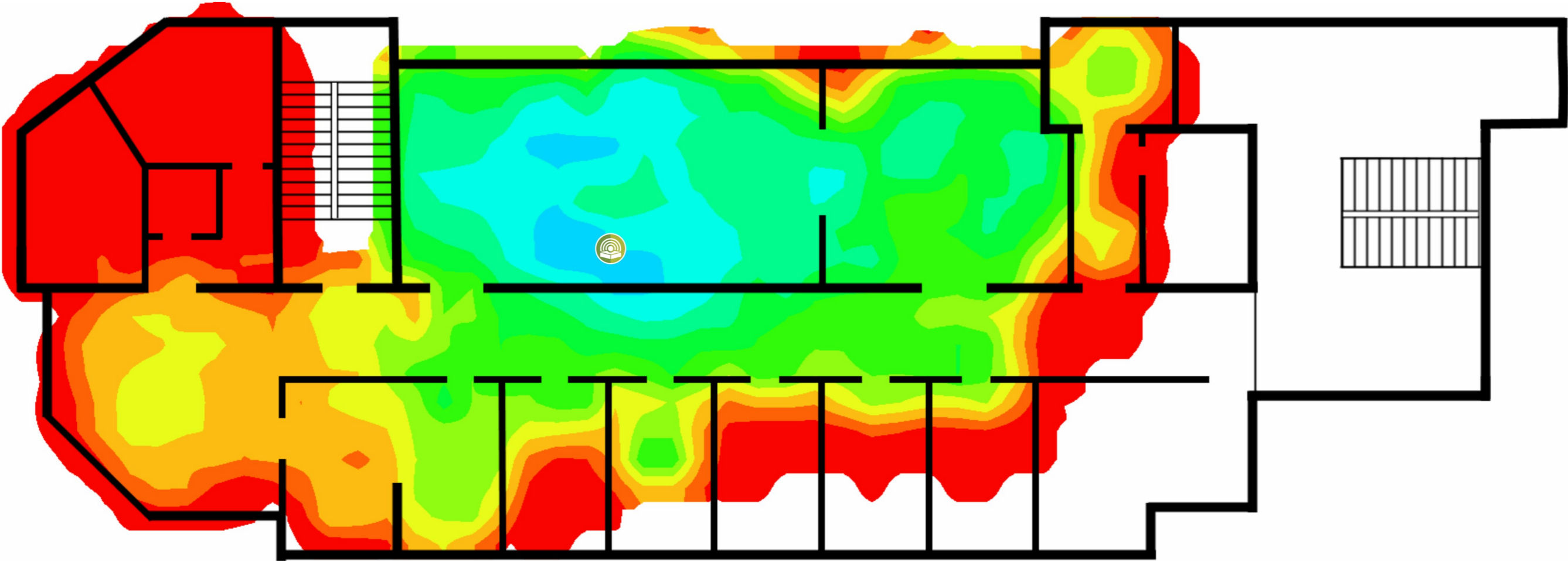
	SSID	MAC					
Aruba 802.11ax	Cappuccino	00:0B:86:00:00:A4	ArubaaHe	1	286.8	WPA2PSK (CCMP)	-17



(Aruba 802.11ax - 00:0B:86:00:00:A6)

( , ) , dBm.

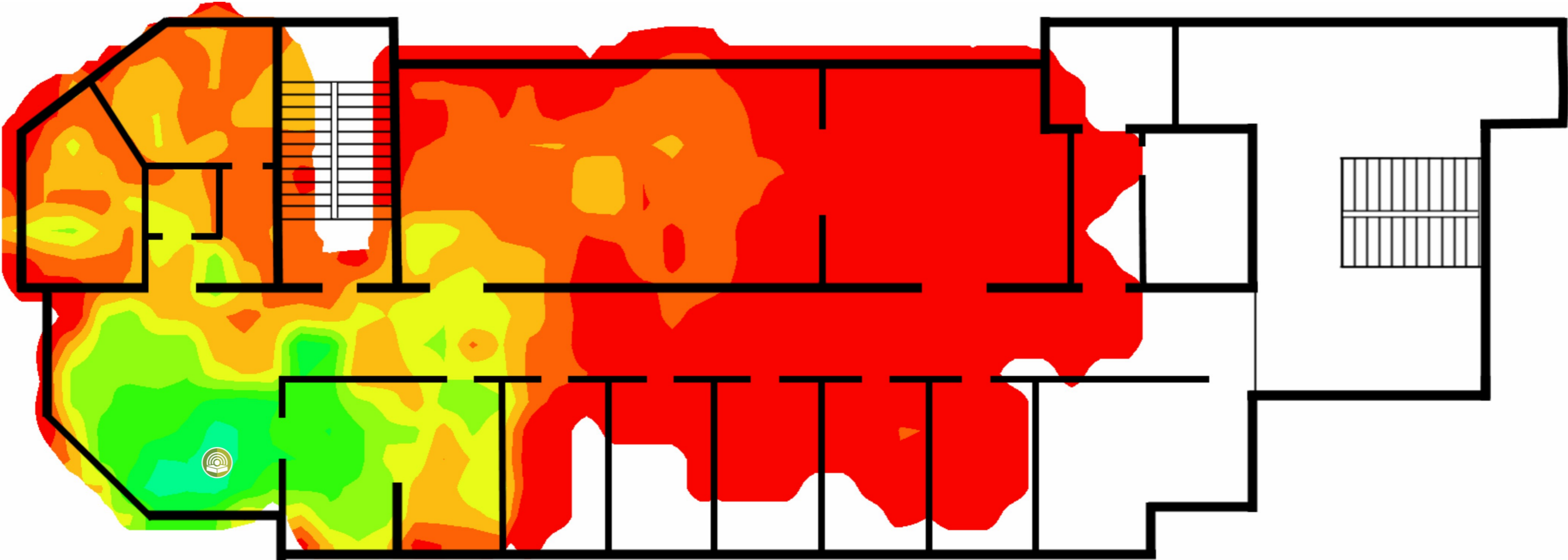
	SSID	MAC					
Aruba 802.11ax	Cappuccino-5	00:0B:86:00:00:A6	ArubaaHe	44 (44-48@40, 36-48@80, 36-64@160)	2402.0	WPA2PSK (CCMP)	-10



(Aruba 802.11ax - 00:0B:86:00:00:4A)

( , ) , dBm.

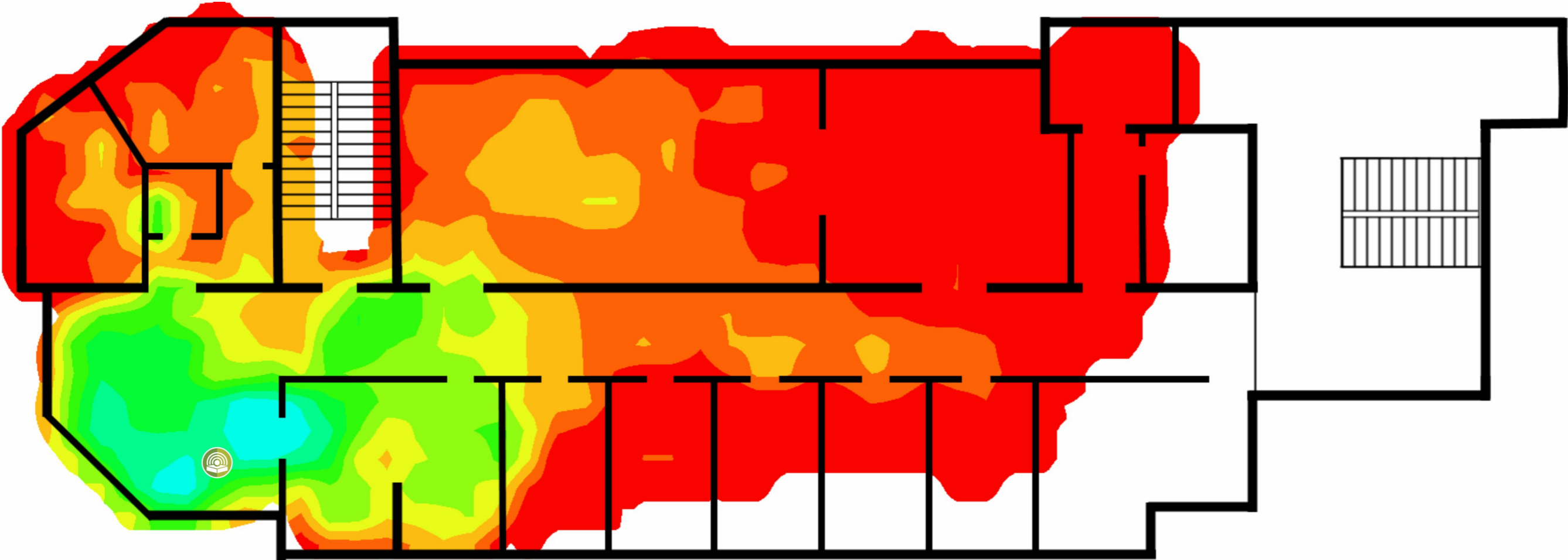
	SSID	MAC					
Aruba 802.11ax	Cappuccino	00:0B:86:00:00:4A	ArubaaHe	6 (6-8@40)	573.5	WPA2PSK (CCMP)	-17



(Aruba 802.11ax - 00:0B:86:00:00:4C)

( , ) , dBm.

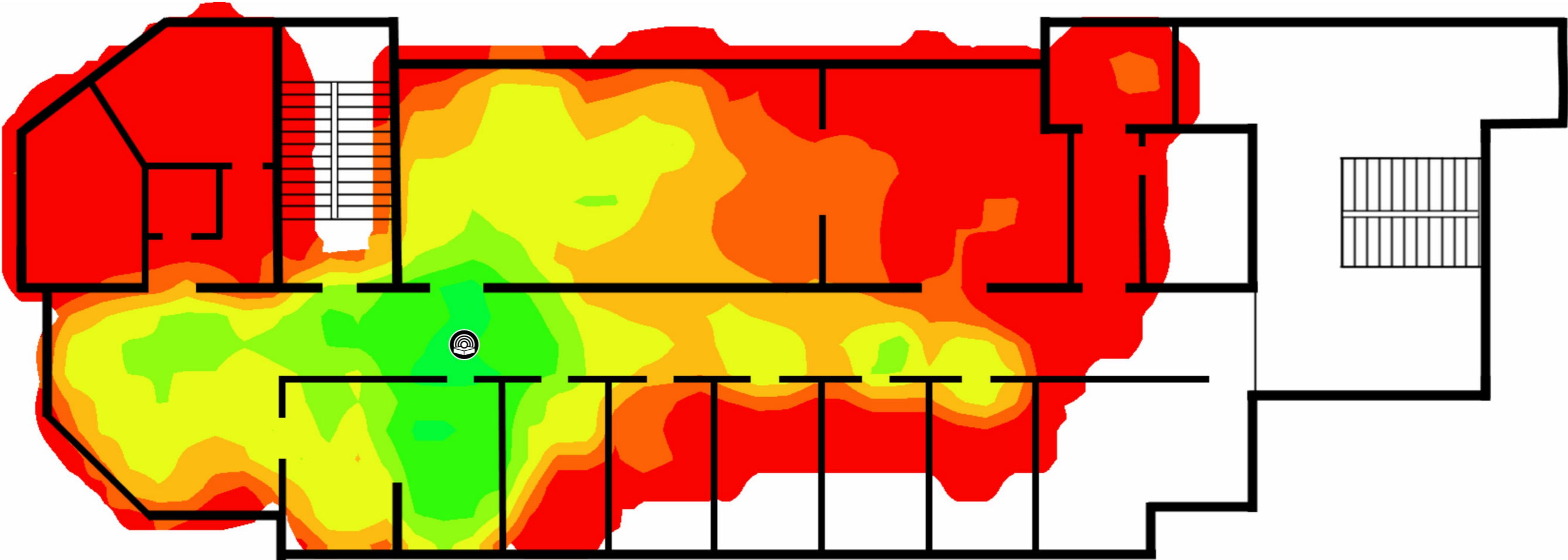
	SSID	MAC					
Aruba 802.11ax	Cappuccino-5	00:0B:86:00:00:4C	ArubaaHe	44 (44-48@40, 36-48@80)	1201.0	WPA2PSK (CCMP)	-22



(Cisco 802.11n (5 GHz) - 58:6D:00:00:00:7D)

( , dBm.

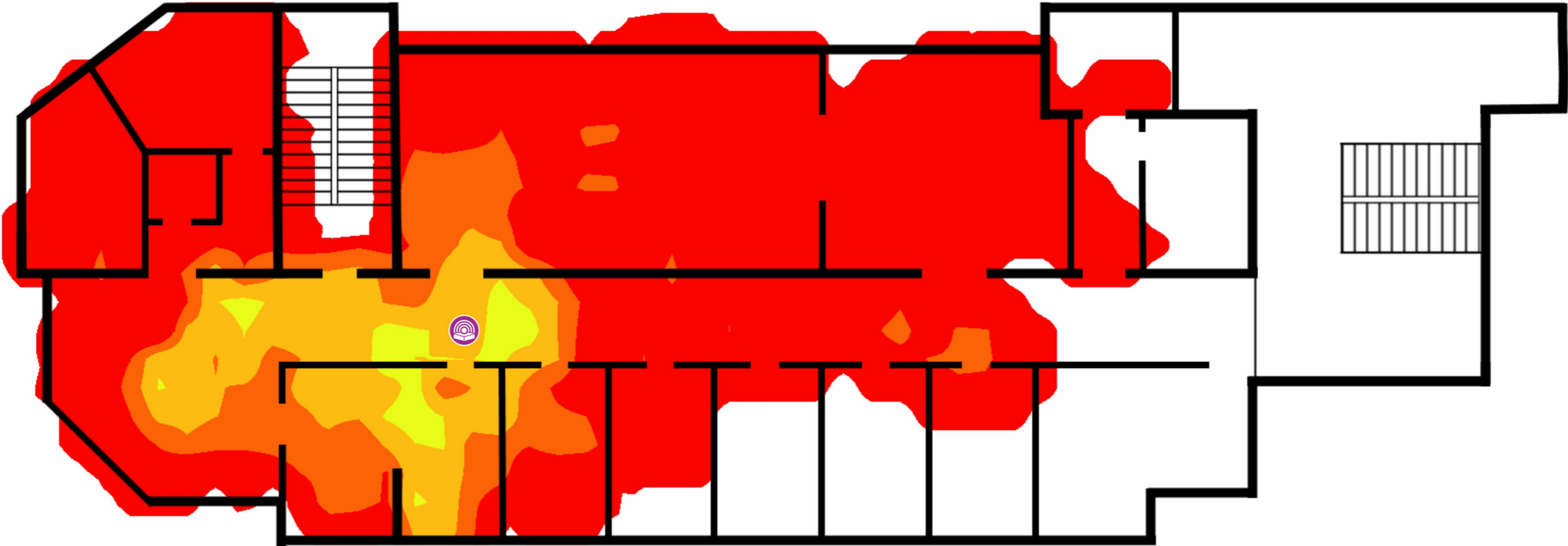
	SSID	MAC					
Cisco 802.11n (5 GHz)	SenchaTea	58:6D:00:00:00:7D		36 (36-40@40)	450.0	WPA2PSK (CCMP)	-35

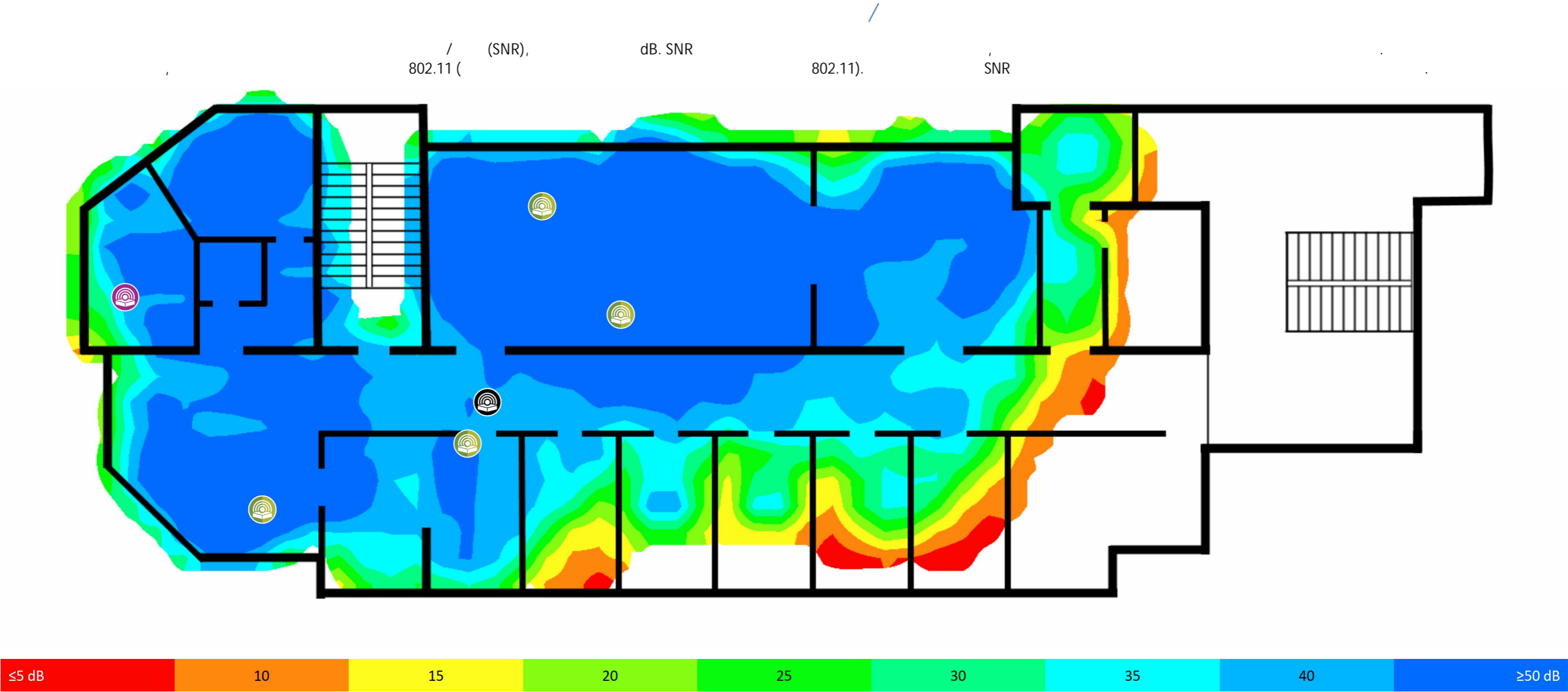


(Cisco 802.11n (2.4 GHz) - 58:6D:00:00:00:7C)

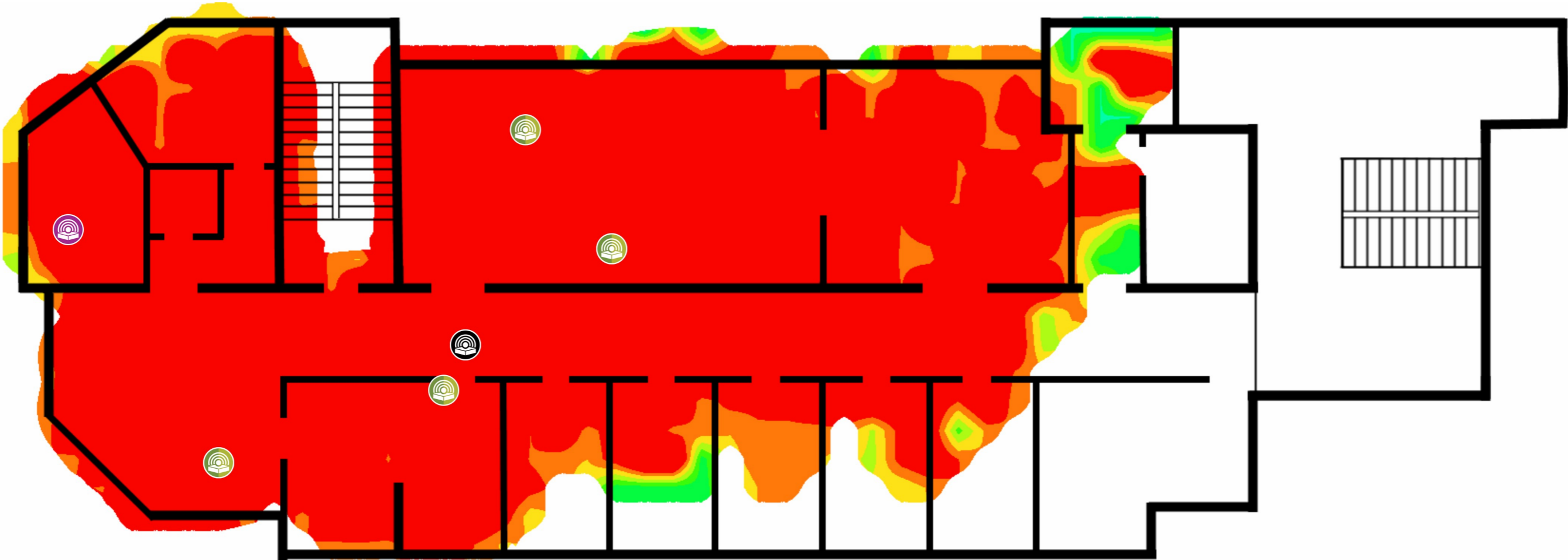
( , dBm.

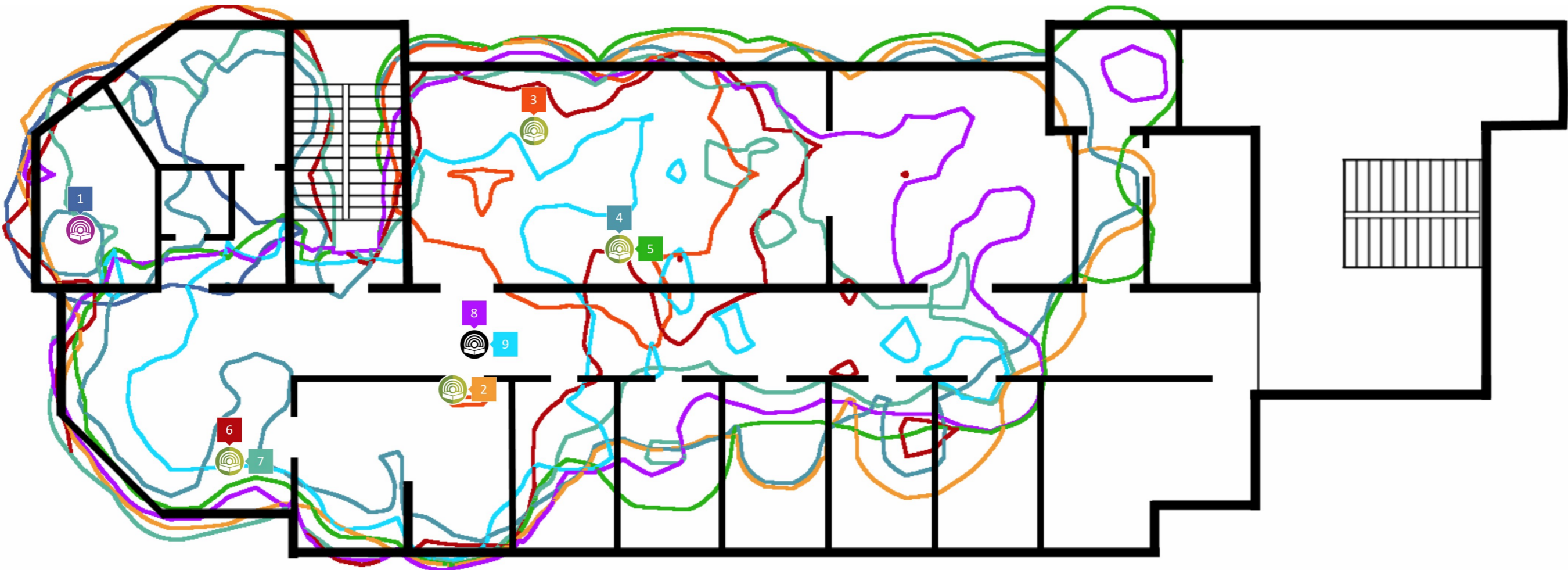
	SSID	MAC					
Cisco 802.11n (2.4 GHz)	SenchaTea	58:6D:00:00:00:7C		11	144.4	WPA2PSK (CCMP)	-33



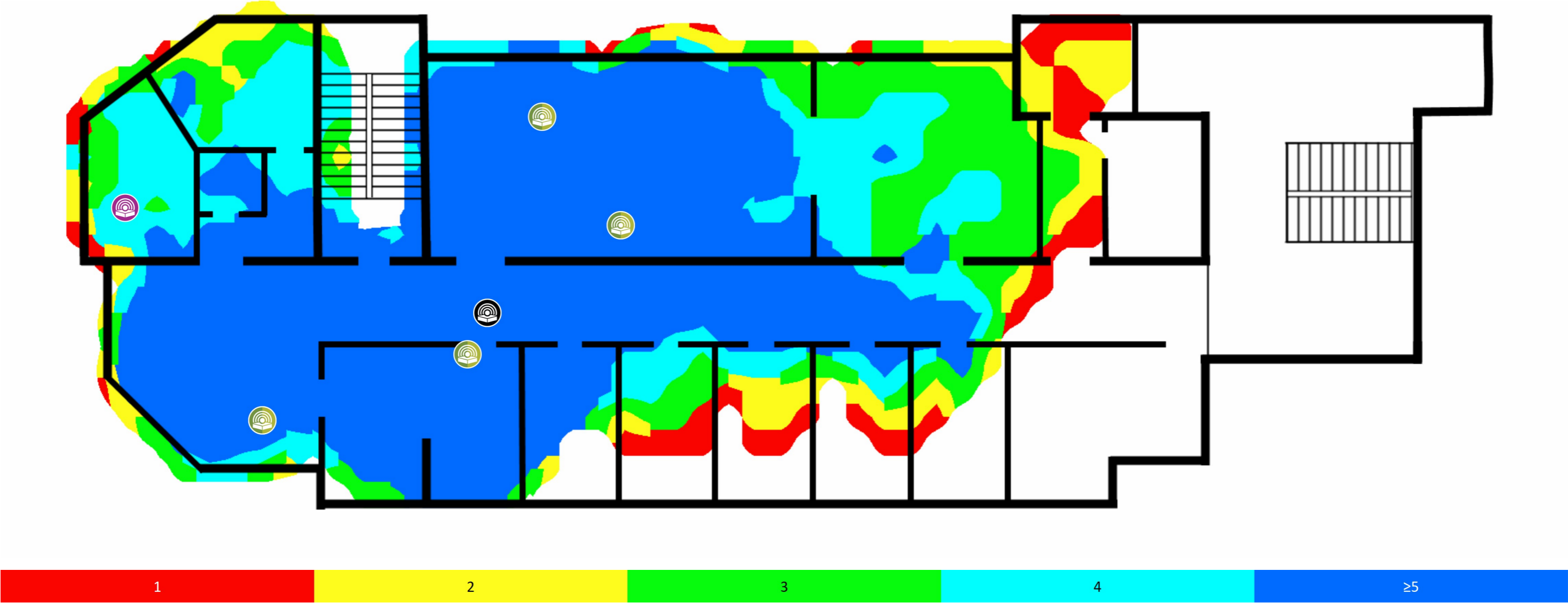


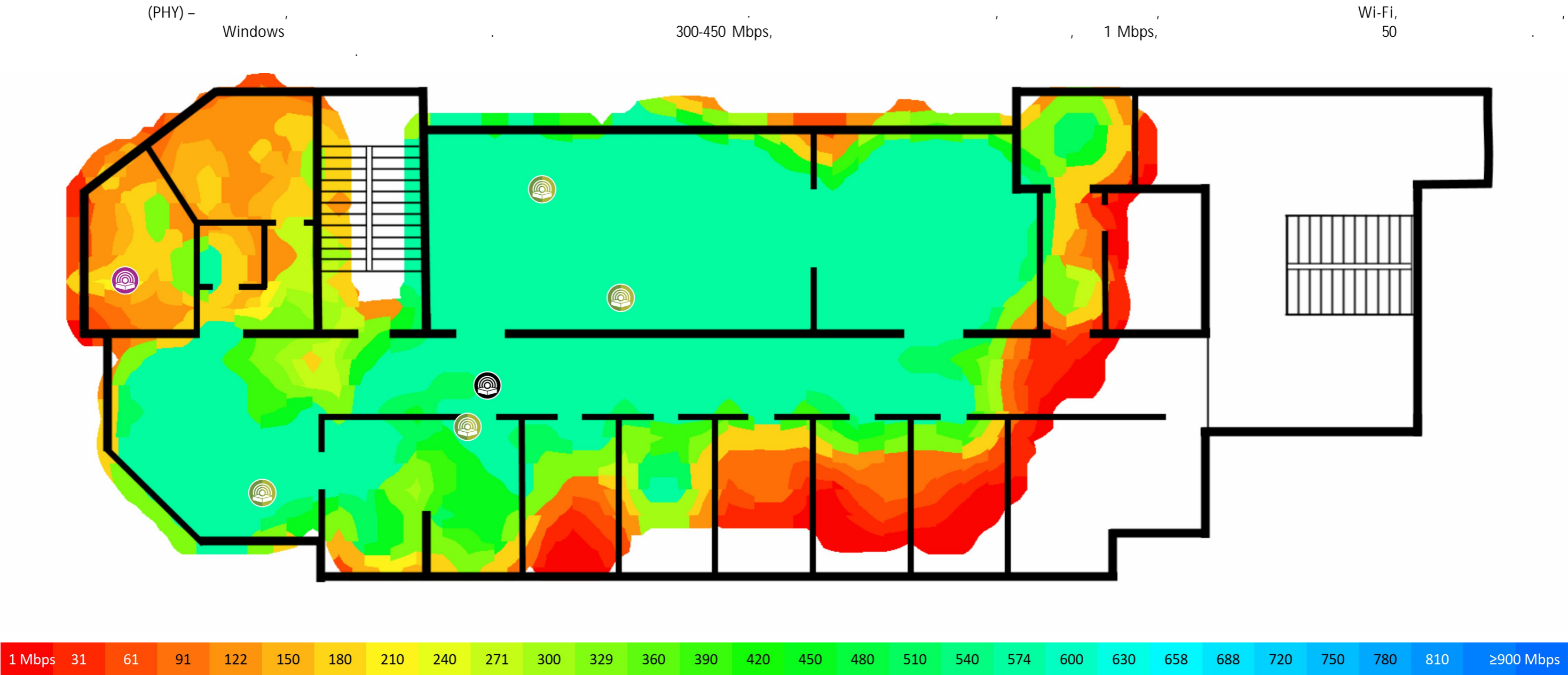
/ ( (SIR), dB. SIR ( 802.11) ( SIR )



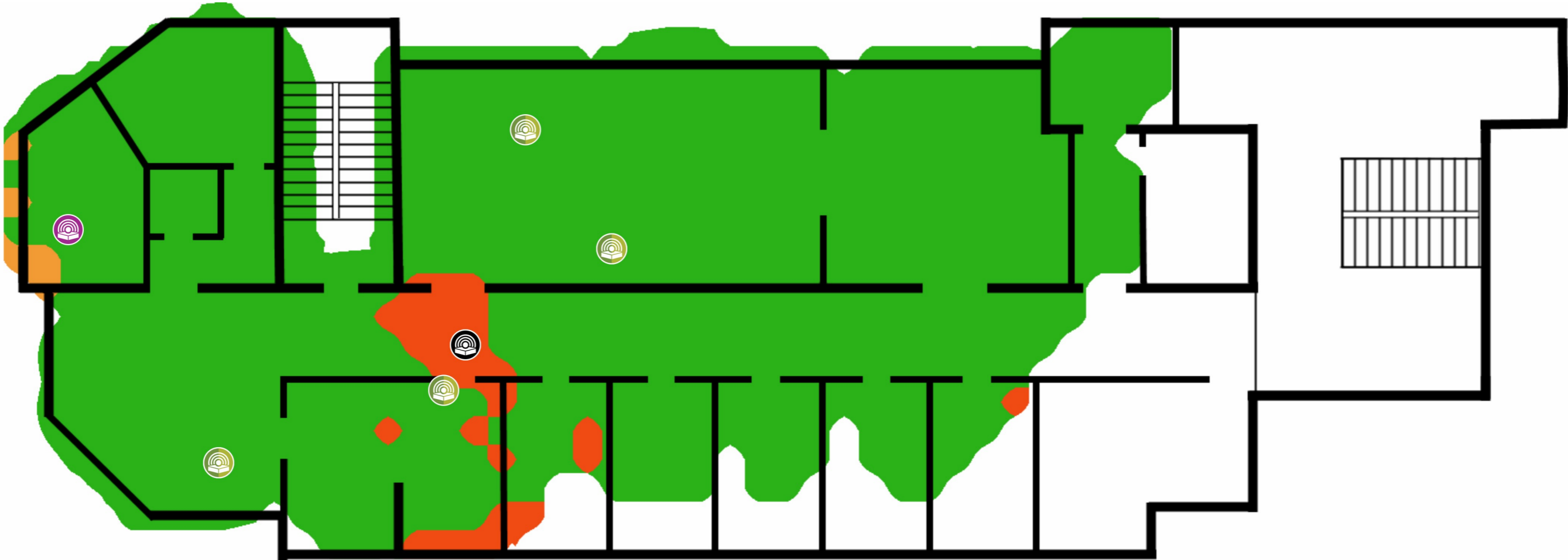


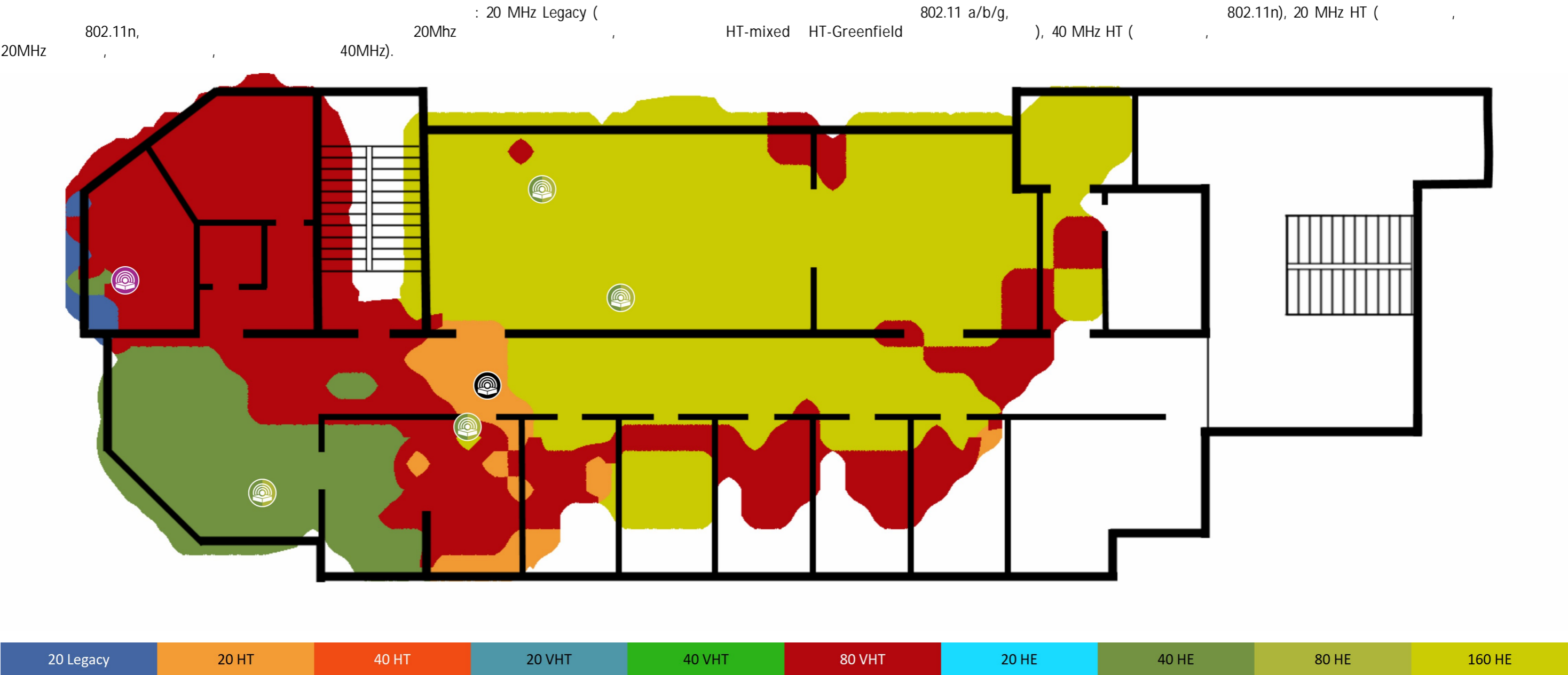
- 1 Neighbors3rdFloor
- 2 Aruba 802.11ax
- 3 Aruba 802.11ax
- 4 Aruba 802.11ax
- 5 Aruba 802.11ax
- 6 Aruba 802.11ax
- 7 Aruba 802.11ax
- 8 Cisco 802.11n (5 GHz)
- 9 Cisco 802.11n (2.4 GHz)





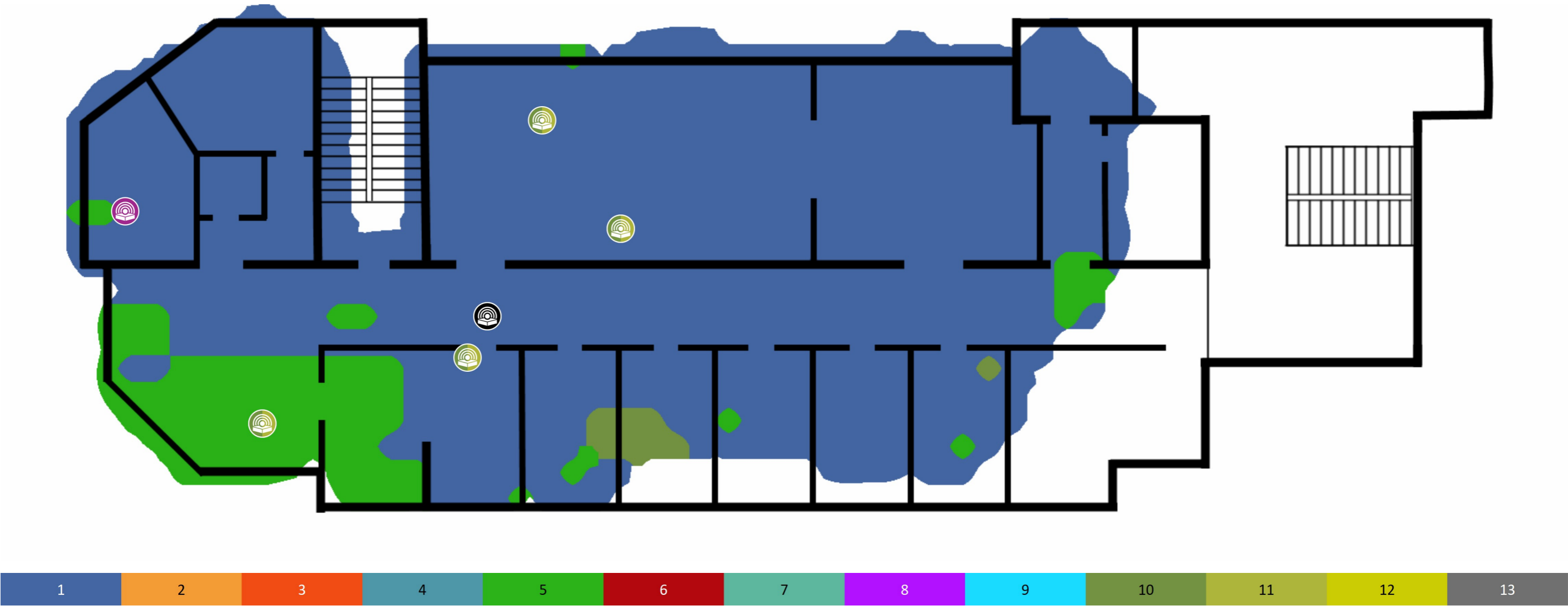
( a/b/g), HT-Greenfield ( 802.11n 802.11n, 802.11n : Non-HT ( , 802.11n 802.11n 802.11 a/b/g, 802.11n 802.11 a/b/g ). 802.11n ), HT-mixed 802.11

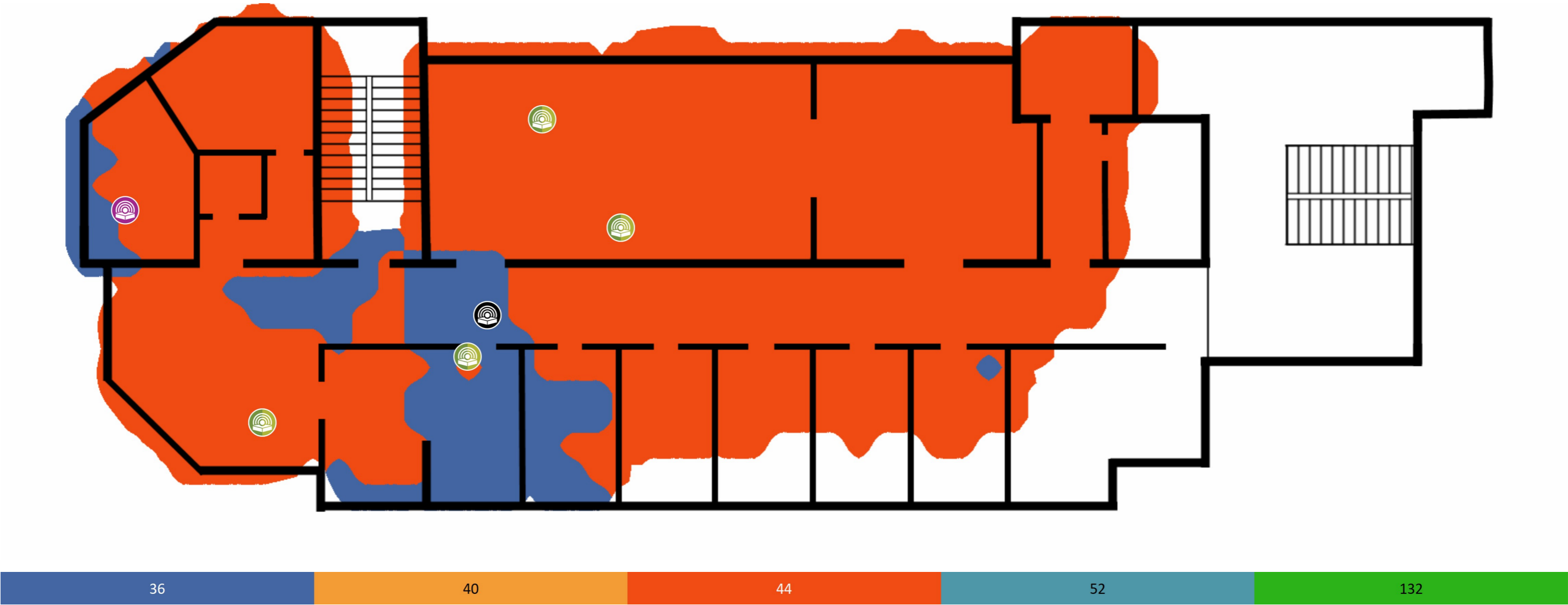




2.4

2.4





- ; FF - ; CB - . SL - ; SNR - / ; SIR - / ; AP - ; PHY

